



---

## A Relative Analysis of Gardens of Pakistan and UK

Talha Sabir<sup>1</sup>, Saira Ashraf<sup>2</sup>, Muhammad Waqar Younis<sup>3</sup>, Huma Shahzadi<sup>4</sup>, Abdul Rehman<sup>5</sup>

Almasa Environmental Solutions LLC, Unite Emirate Arab<sup>1,3</sup>

University of Engineering & Technology UET, Pakistan<sup>2</sup>

Lahore College For Women University, Pakistas<sup>4</sup>

University of Malaya, Malaysia<sup>5</sup>

talhasabar489@gmail.com<sup>1</sup>, sairacrp1418@gmail.com<sup>2</sup>, waqarkhokhar6512@gmail.com<sup>3</sup>,  
its.huma.iqbal@gmail.com<sup>4</sup>, urbanplanner24@gmail.com<sup>5</sup>

---

### Abstract:

Parks play an important role in improving people's quality of life, especially amidst rapid urbanization. This research aims to explore how differences in park design and management affect people's use and perceptions in both countries. The approaches used in this research are qualitative and quantitative. Data were collected through literature review, field observations, and interviews with relevant parties, such as park managers and visitors. The findings show that parks in Pakistan have great cultural significance, often used for social gatherings and recreation, with examples of historical parks such as Shalimar. On the other hand, gardens in the UK offer a diverse range of styles and functions, from formal gardens to natural landscapes, serving as an educational resource for botanical lovers. This analysis provides insights into the unique characteristics of parks in both countries and provides recommendations for park planning and management in Pakistan, taking into account best practices from the UK.

**Keywords:** Parks, Pakistan, UK, design, cultural significance, urban planning, comparative analysis.

---

*Corresponding:* Talha Sabir  
E-mail: talhasabar489@gmail.com



## INTRODUCTION

Global issues related to climate change and rapid urbanization have become major challenges for many countries around the world (Ogwu, 2019). With rapid population growth, the need for green open spaces has become even more pressing. Parks and other public spaces not only provide ecological benefits, but also play an important role in improving the quality of life of urban communities (Zhang, 2016). However, many cities in developing countries such as Pakistan experience difficulties in providing and maintaining adequate parks, which contributes to mental and physical health issues in the community.

Specifically, in Pakistan, parks are often overlooked in urban planning, reducing people's access to healthy open spaces (Organization, 2016). On the other hand, parks in developed countries like the UK have a more planned and well-managed approach, creating spaces that are not only beautiful but also functional. This comparison suggests a significant gap in park management between the two countries, which warrants further investigation (Vila, Darcy, & González, 2015).

Previous relevant research has addressed various aspects of parks in developed and developing countries, but rarely has it directly compared parks in Pakistan with those in the UK (Putri, Junaidi, & Mustika, 2019). Some studies focus on the social and environmental benefits of

parks in developed countries, while others highlight the challenges faced by parks in developing countries. However, the lack of studies reviewing these two contexts simultaneously indicates a gap in the literature that needs to be filled (Kabisch, Qureshi, & Haase, 2015).

The urgency of this research is high, given the importance of parks as public spaces in improving people's quality of life amidst rapid urbanization. With the increasing awareness of mental and physical health, and the need for open spaces, this research aims to provide deeper insights into park design and management. This is expected to provide useful recommendations for urban planners and policy makers.

The uniqueness of this research lies in its comparative approach between parks in Pakistan and the UK, which has not been done. By exploring the differences and similarities in the design, function, and cultural significance of parks, this research is expected to offer a new perspective in understanding how parks can be optimized to meet the needs of communities in various contexts.

The aim of this research is to analyze and compare parks in Pakistan and the UK, and explore how differences in design and management affect community use and perceptions. The research also aims to identify best practices from both countries that can be applied in the Pakistani context, as well as provide recommendations for park improvement.

The benefits of this research will not only contribute to the academic literature, but also have the potential to influence public policy regarding park management in Pakistan. By educating stakeholders on the importance of parks and open spaces, this research is expected to encourage more investment and attention in the planning and management of green spaces, which will ultimately improve the quality of life of urban communities.

## RESEARCH METHOD

This research used both qualitative and quantitative approaches to analyze gardens in Pakistan and the UK, enabling an in-depth understanding of their design, use and cultural significance. Data collection was conducted through a literature study, which included information from various sources such as books, scholarly articles, and official reports regarding the history, design, and function of parks in both countries. In addition, field observations were made with direct visits to the parks to observe physical conditions, design, and visitor interactions. Interviews were also conducted with relevant parties, such as park managers, landscape architects, and visitors, to gain a deeper perspective on park utilization.

The collected data was then analyzed using thematic analysis methods for the identification of patterns and themes in qualitative data, as well as statistical methods for the analysis of quantitative data, such as park area, number of visitors, and available facilities. The results of the study will compare parks in Pakistan and the UK based on predetermined criteria, including an analysis of differences and similarities in the use and public perception of parks. Based on the findings, recommendations will be made for the development of better parks in Pakistan, taking into account best practices from UK parks. Finally, a research report that includes the findings, analysis, and recommendations will be compiled and presented to stakeholders, including the government and the general public, to contribute to better planning and management of open spaces in the future.

## RESULTS AND DISCUSSION

### The evolution and status of design guides for parks in London and Lahore

#### 1. The London Plan

The Mayor's London Plan is the capital's ultimate strategy plan, laying out a fully integrated economic, environmental, transportation, and social framework for development through 2031. The London Plan intends to preserve and promote open spaces, understanding that as London's built form becomes more compact and crowded; the importance of these areas will increase (Carmona, 2015). Table 1 shows the categorization of parks in London.

**Table 1. Categorization of open spaces in London public parks**

Open space categorization	Size guideline	Distance from homes
Regional parks	400 hectares	3.2 to 8 km
Metropolitan parks	60 hec	3.2 km
District parks	20 hec	1.2 km
Local parks and open spaces	2 hec	400 m
Small open spaces	Under 2 hec	Less than 400 m
Pocket parks	Under 0.4 hec	Less than 400 m
Linear open spaces	Variable	Wherever feasible

Source: city of London.gov.uk

#### 2. Local Policies and Strategies in London

The City of London Local Plan was approved in January 2015.

**Table 2. Distribution of open spaces for parks**

Area	Percentage of open spaces	Total size(Hectares)	Publicly accessible(Hectares)
North of the city	51	16.53	12.02
Cheapside& St.Paul	9	2.84	2.73
Eastern cluster	4	1.18	1.06
Aldgate	4	1.33	1.09
Themes & riverside	19	6.17	5.32
Rest of the city	13	4.04	3.44
Total	100	32.09	25.66

Source: city of London.gov.uk

- Make London a better place to live by accommodating expansion without infringing on parks.
- Attempt to maximize and improve town center accessibility from the communities they serve, notably through public transportation, walking, and cycling.
- Seek to maintain and enhance the vitality and viability of town centers, including maximizing housing provision through high density, mixed-use development, and environmental improvement, in accordance with other policies in this plan.
- Make London a more wealthy city by fostering strong and diverse economic growth
- To combat deprivation and discrimination, promote social inclusion.
- Increasing accessibility
- Make London a more appealing, well-designed, and environmentally friendly city (The City of London Parks Strategy, 2019).

#### 3. Strategic planning and the functional requirements of parks in London

The community's vision for a complete parks and recreation system is documented in the General Plan, and the current and proposed sites play a key part in achieving that vision (Daniels, 2017). Preparation and adaptability are the keys to realizing this dream. The plan is the first phase in

laying the groundwork for the Strategic Plan's twenty-year implementation (Bamberger, Biron, & Boon, 2014). Recognizing the inevitability of change, the plan also contains a set of instruments that will enable cities to respond quickly to new opportunities. Cities should plan and implement best practices for green design for parks and development in order to improve the environment (de Roo & Miller, 2017). In addition to green building criteria and energy conservation regulations, the Cities promote the use of native landscaping and salvaged, recycled, and sustainably obtained materials in new construction.

The Strategic Plan emphasizes the need of developing master plans for various existing parks, as well as how these efforts will contribute to the system's overall success and long-term viability. Master plans and other planning projects throughout the cities will inform and be informed by the Implementation Framework. It is designed to be a "living document" that can measure progress and be modified to match changing demands, realities, and opportunities (Vinod Kumar, 2022).

#### 4. National Level Planning and the functional requirements of parks in Lahore, Pakistan

Pakistan horticultural administration known as PHA, feels that vegetation is critical to a city's success. Thus, parks and green belts are being built in every nook and cranny of Lahore to restore its beauty and revivify its life. Flower displays are being built along the road according to world horticulture standards. By offering effective and timely services, it hopes to establish the groundwork for a secure and sustainable community that breathes and lives well. The PHA's overall purpose is to improve the city's public infrastructure through constructing parks and maintaining natural resources in order to protect residents' quality of life (Kealiikanakaoleohaililani & Giardina, 2016).

In addition to their primary recreational function, parks can serve as catalysts for community development and rehabilitation. They are a significant part of the city that beautifies it, connects us to nature, and provides a fantastic social and cultural exchange platform. As a result, PHA is now in charge of preserving and protecting this natural sanctuary. PHA has established a strategy to keep the greenways in good repair, which includes ongoing park and facility restorations, maintenance of green belts and sidewalks, seasonal flexibility in care, and interim management to improve the overall park maintenance process (Guides, 2015).

#### 5. Parks and Horticulture Authority Act, 2021

The Public parks, green belts, and open spaces, to name a few, are developed and maintained. Landscape, planting, face-lifting, and lighting of specific places in and around under this act. Government projects for the beautification of the City of Gardens are launched and overseen. In the Lahore horticultural sector, an integrated approach is being developed to ensure uniformity.

#### 6. National Level Design guidelines of Pakistan

Pakistan has National Level Design Guidelines which provide (minimum areas) for different types of open spaces, these set out that the following specifications to be considered while designing any park/open space

**Table 3. Design specifications extracted by NRM, Pakistan**

Type	Description	Allocation criteria	Total area (ha)	Hectors/1000
<b>Metropolitan city park</b>	A specialized facility containing botanical gardens and zoo	2 million	50-70	0.0025-0.35
<b>City park</b>	Wide range of amusement facilities, landscaping	400000	12-15	0.03-0.037
<b>Community</b>	Selected amusement	100000	4-5	0.04-0.05

Type	Description	Allocation criteria	Total area (ha)	Hectors/1000
park	facilities, walks, tree plantation			
Neighborhood park	Wide range of child play fixtures, walking and jogging paths	25000	3.25-4	0.13-0.16
Mohalla parks	Two lots with slides, swings	6250	1.6-3.6	0.26-0.58
<b>Total</b>		0.485-0.826		

Parks are categorized as Metropolitan Park, City Park, Community park, Mohalla park and neighborhood park. Areas are mentioned in figure.

Other recreational parks should include

- Parking area = 5 acres
- Cricket Stadium = 5 acres
- Hockey Stadium = 2 acres
- Football Stadium = 4 Acres
- Golf club= 9 holes (80 acres)

**Table 4. Specifications of Sports complex**

Items Item	Playing Area	Minimum Run-on
Cricket Pitch	65x16ft (pitch)	150ft (playing area)
Football	344ftx 223ft	357x 229ft
Hockey	298x180ft	324x193ft
Tennis	77.9x32ft	119x59ft
Volleyball	59x29ft	78x42ft
Basketball	85x45ft	98x59ft
Badminton	43.9x19ft	52x26ft

### Measuring the quality of parks and green spaces of Lahore and their design features

The British built barracks in the castle quadrangles and public works projects in the garden suburbs in 1848. Even after the Badshahi mosque was given to the Muslim community and the Hazuri Bagh was renovated using modern archaeological techniques, the original fabric of garden symbolism continued to erode (Ullah, Jiny, & Jin, 2018). In Punjab, the British imposed a new way of life, which is evident in their landscape and architectural projects. They chose a new form to demonstrate their rule over previous landscape architectural achievements like the Shalimar Garden and Mughal monuments (Ullah et al., 2018).

The British began an urban expansion of their major cities soon after occupying Punjab. New civil lines and a cantonment were built in the south and southeast of Lahore, containing racetracks, Tennis courts, parade grounds, and polo and cricket fields. In the twentieth century, Lawrence's garden grew and sold plants to the general public, became a focal point of botanical and horticultural interest.

The British landscape reveals that horticulture (the promotion of botany research and education) and entertainment were important to them. The British Raj's considerable interest in sports and amusement is demonstrated by the establishment of the Lahore Gymkhana (formerly known as the Lahore & Mian Mir Institute) as an imperial emblem of power and legacy. This complex was the social hub of the British era, where the upper crust gathered to partake in sports and socialize with their peers. It was forbidden for locals to enter. The club only allowed a few local royalty members, including Muslim Nawabs and Sikh lords. Despite its design for the top echelons of British society, the garden became Lahore's first public park, with people of Muzand and Ichhra's old towns permitted access.

Timurid gardens were developed in Central Asia and Iran between the 14th and 16th centuries, and were the inspiration for Mughal gardens. To enable for the building of a Charbagh paradise garden - a microcosm of an earthly heaven - a high brick wall elaborately adorned with delicate fretwork surrounds the location. The primary entrance to Shalimar was on the lower-most terrace, which was only open to nobles and the public on rare occasions. The Emperor's Garden, located on the middle terrace, had the most extensive waterworks of any Mughal garden. The Emperor's harem were to have the uppermost terrace.

Long fountains flanked by brick khayaban walkways meant to be elevated to allow greater views of the garden divided the square-shaped terraces into four comparable smaller squares. Cascades were created to cascade into the center terrace along marble walkways called chadors, or "curtains." Water pooled in a big pool called a haz, which was surrounded by a sitting pavilion.

As a result, the Lawrence Garden on the upper mall was the only British-built public garden in Lahore. It has a formalized area, a botanical garden, a zoological garden, and a cricket pitch. A new design concept and a unique landscape theme were also introduced (Hunt, 2015). Lahore was the capital of the Mughal monarchy, and it became a significant metropolis after Akbar ordered its fortification. Other Mughal towns in the Subcontinent, such as Delhi, Agra, and Fatehpur Sikri, had gardens as well, but Lahore was the sole one (Ullah et al., 2018).



**Figure 1 & 2 Concepts of the garden from Mughal times**

The Mughal gardens evolved from a turbulent period of territorial and cultural change. Early Mughal monarchs transformed the landscapes they viewed, as well as themselves. Previous research on Mughal gardens has focused on the continuities of form, function, and meaning evident in later Mughal sites like Lahore's Shalimar Garden, rather than these landscape transition processes.



**Figure 3 & 4 Jahangir's tomb's garden**



Figure 5 & 6 Lahore Fort Garden



Figure 7 & 8 view of Hazoori Bagh and Shalimar Garden

Lahore's modernization, which was influenced by early twentieth-century European socio-spatial policies, dramatically changed the historic urban structure's green areas. A shift from large-scale royal gardens to modern gardens was observed. Private courtyards inside traditional houses served as the only outdoor spaces to gather family members, relatives, and neighbors. Large boulevards and separate apartment blocks are being replaced by large boulevards and different apartment blocks for ideological, social, and economic reasons.

People subsequently migrated from their private outdoor spaces to public ones as a result of these improvements and the creation of new public green spaces referred to as "parks." The secular authoritarian regime was overthrown by a conservative theocratic regime during the Islamic Revolution in 1979. As a result of current attitudes and actions, the dialectical interaction between public and private green areas has entered a new phase.

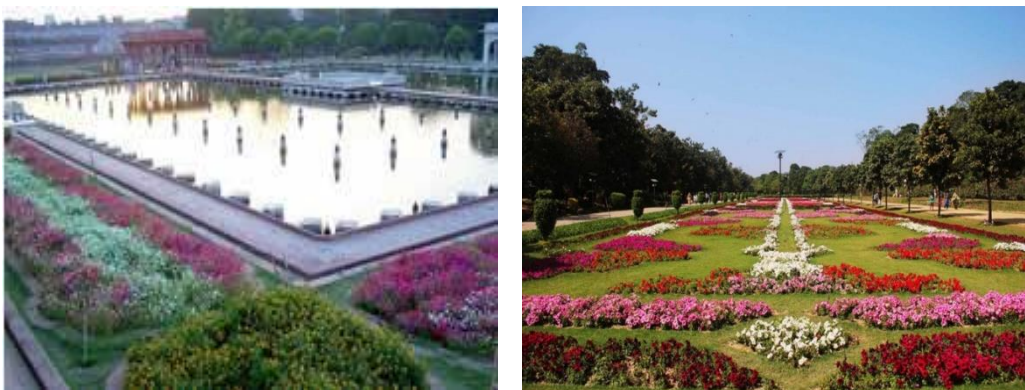


Figure 9 & 10 City built-in gardens

Gardens arose at an era of territorial and cultural upheaval. The early Mughal kings changed the sites they visited and made required modifications based on their findings. Previous Mughal garden studies has focused on the continuities of form, function, and meaning seen in later Mughal settings, such as the Shalamar garden, rather than these landscape transition processes.



Figure 11 & 12 Public parks Lahore

Plants contribute form and structure in landscape design. Its goal is to look at the history and significance of utilizing clipped plants for definition and form, as well as plants for texture like leaves and bark, the beauty of green on green, the shape of an espalier as a wall feature, and trimmed 'cloud' as a live sculptural element.

### The Parks of London and their design features

London, the business and industrial center of the United Kingdom, is a vibrant, modern, and urban city bustling with activity. Despite popular belief, London boasts over 400 green spaces. Throughout Greater London, there are over a thousand parks and green places to enjoy. Green areas include royal parks, common lands (or commons), public gardens, city farms, converted churchyards, and specially designed open spaces and gardens. While certain spots have acquired international acclaim, there are still a number of lesser-known parks in London that are well worth a visit.

#### 1. Royal Parks of London

In Greater London, Pedestrian safety and security are vital, and safety audits should be done for all new road layout proposals. By providing signage and regular seats where it is most required, street furniture should be implemented to facilitate walking. Pedestrian routes throughout the Park should be planned to be inclusive and accessible for all, with a hard-standing surface and as few hills as feasible. Footpaths and official crossings should be wide enough to meet future demand and cater to pedestrian desire lines. To ensure that routes are accessible to all users, walking surfaces should be constructed to minimize gradient changes and provide appropriate design elements.



Figure 13 The Royal Parks Movement Strategy

Source: hackney.gov.uk

Following the dissolution of the monasteries in the 1540s, Henry VIII gained control of a large portion of the land that would later become the royal parks. Originally, these lands were reserved for the royal family's exclusive hunting grounds. They were closed to the public until the mid-nineteenth century, but they are now available for exploration, enjoyment, and use (James's, 2020).

## 2. Public Parks

In Hackney, Victoria Park, London's first public park, was established in 1842. Shortly after, Battersea, Finsbury, and Southward parks all opened to the public. Wide streets, big lakes, and lovely bandstands and pavilions characterize all four parks. Due to rigorous maintenance, several of these features have survived to this day.

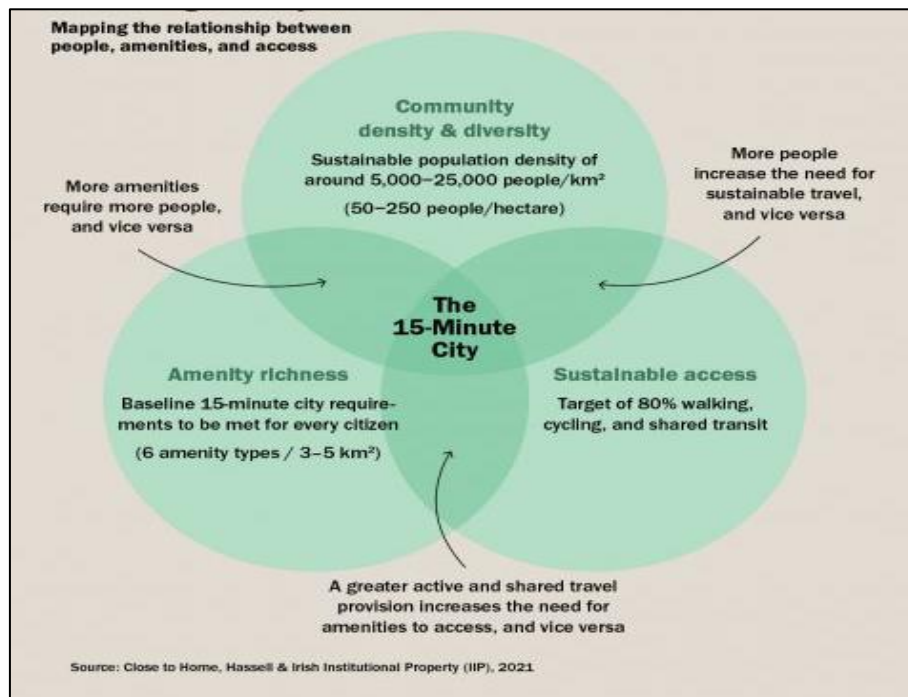


Figure 14 minute enabling smart ecosystem for public

Source: hackney.gov.uk

The public parks were built to bring more greenery and open space to a city that had become increasingly urbanized over time. Victoria Park's East End location made it more accessible to most working-class people and provided a more relaxed alternative to Hyde Park, which was more affluent (Bentley, 2021).

## 3. Common-land of London

In London, there are many "commons," also called "common-lands." The commons, in contrast to its parks, which are sometimes gated and enclosed locations that create the idea of being apart from the rest of the city, are substantially more open and accessible to everyone. In comparison to the city's more developed parks, they're often a touch wild and distant.

The Normans established common-lands in the eleventh century. Manor owners made meadowland freely available to land laborers throughout the period so that they could utilize it as a common grazing farm once the harvest was completed. Workers were able to earn their own income as a result of this.



**Figure 15 Common-lands of London**

Source: Park Grand London

As London's population grew and more property was enclosed for private benefit, popular efforts to safeguard London's common-lands, such as Hampstead Heath, arose. As a result of these campaigns, many commons such as Hampstead Heath, Clapham Common, and Wimbledon Common remained accessible to the public with unrestricted access. In reality, London contains over a hundred commons scattered around the city (Clark, 2019).

#### **4. Pleasure gardens**

People began to create and build magnificent purpose-built pleasure gardens that were purely for the entertainment of the public. Pleasure gardens are also said as purpose gardens (built for some particular purpose). Many of them were created to help the residents to heal themselves from different ailments and illnesses. People spend holidays at such places. It was noted that these purposeful parks are found mainly along watersides (springs). Other parks such as Alexandra Palace and Park, are designed to accommodate both indoor and outdoor activities.



**Figure 16 Purpose-built parks**

Source: London attractions

Several parks have been built particularly to memorialize or host noteworthy events. The 1851 Exhibition was transferred from Hyde Park, and Crystal Palace was built to hold it. You'll want to make sure you're prepared for the day with so many parks and gardens to see during your visit to London (Wong, 2021).

## 5. Hyde Park, London

Hyde Park, one of London's eight Royal Parks, is a tranquil oasis that stages world-class events. The 350-acre park, which runs along to the Serpentine, is home to 4,000 trees, a meadow, and lovely flower gardens. Among the well-known landmarks are the Serpentine Bridge, the Diana Memorial Fountain, and the famous Achilles Statue. Everyone will find something to enjoy at the park. Swimming, boating, and horseback riding are all available. The park has previously served as a rallying point for many groups. If you visit on a Sunday morning, make a point of going at Speaker's Corner, where people from all walks of life gather to share their views with the rest of the world. From November to January, you may visit the massive Winter Wonderland Christmas market (Rabbitts, 2015).

### **The challenges to design in creating a successful park in London and Lahore/research gap**

Parks have vital recreational and amenity value that should not be disregarded. Good Parks for may help define criteria for high-quality green spaces, boost the position of council parks services, and win policymakers' and decision-makers' support. However, this value does not adequately reflect the entire value and purpose of parks, nor the full contribution they make to local and national objectives when viewed in isolation. The risk gap of a valuable service deteriorating or disappearing, both as an amenity and for the contribution parks should offer to broader policy goals such as community cohesiveness, air quality improvement, and biodiversity (Mackintosh, 2019).

According to the literature, gardens and parks in the United Kingdom were designed as a nobility's leisure garden and a symbol of power and rank. Gardens are brilliantly designed on rocky terrain. Walkways are built to take advantage of the natural topography of the ground. The climate is the most important component, which is shown in the use of shady trees and a large system of multiple fountains. The intricate system of fountains was powered by gravity, taking advantage of the natural terrain of the garden. Parks in the United Kingdom place a strong emphasis on views and vistas. Designed to provide a pleasing setting for the entertainment and amusement of a select few - a demonstration of the king's authority and grandeur. Absolute control over nature necessitates reconstructing it and changing its trees and plants into man-made geometric structures. Different parts of the intersection are focused on. The central axis is a line that runs from the top of the building to the horizon. The principal landscape qualities are aligned with the central axis.

In Pakistan there are Former royal gardens, parks have limited public access. Recreational, educational, botanical garden, and zoo parks are all types of parks that are expressly designed for public use, enjoyment, and education. Few parks carry Islamic flavor and novel concept, the park's modern design to worldwide specifications makes it a one-of-a-kind project in the globe" (Rehman, 2015). This research is unique in a sense that it will highlight the design features of the parks designed in Pakistan and in UK, Pakistan being a developing country do not have much budget to spend on parks and recreation, but this research can give an idea to policy makers that how to preserve the cultural heritage parks. UK parks do carry modern technology, but parks in Pakistan depict culture. This research will help architect, urban planners and urban designers to learn the differences in urban design in both developed and developing countries.

## **CONCLUSION**

Informants point out that the primary issue in the planning context is political influence on planning decisions, which is outside the scope of the planners' authority. Making policy is not transparent enough. There is no planning policy document for the additional territory that was added to the boundaries of the region that makes up Lahore City in 2016. There is merely a new land

use plan and a newspaper notification. The new plan should be a comprehensive policy document that includes a map of all the areas covered by the local Development Authority as well as all the places that fall within its purview. The inclusion of healthy policies can be threaded throughout the future plans; a separate chapter devoted to them is not required. For example, regulations should focus on encouraging an active lifestyle by enhancing sidewalks and pedestrian crossing indications and allowing pedestrians the right to cross the road first rather than promoting a car-friendly environment by expanding highways as a remedy for congestion. The participants in the informant interviews cited safety as a major concern for parks and other public areas. The right security elements can be added to park gates to achieve this. Additionally supporting a healthy environment is the City's urban planning. Urban regeneration initiatives should be implemented to preserve historic structures and revitalize urban cores. Additionally, programs that educate and raise people's awareness of issues like trash management and street cleaning initiatives can enhance the quality of life in slums and squatter communities.

## REFERENCES

- Bamberger, Peter A., Biron, Michal, & Boon, Corine. (2014). *Human resource strategy: Formulation, implementation, and impact*. Routledge.
- Carmona, Matthew. (2015). London's local high streets: The problems, potential and complexities of mixed street corridors. *Progress in Planning, 100*, 1–84.
- Daniels, Tom. (2017). *Environmental planning handbook*. routledge.
- de Roo, Gert, & Miller, Donald. (2017). *Integrating city planning and environmental improvement: Practicable strategies for sustainable urban development*. Routledge.
- Guides, Rough. (2015). *The Rough Guide to Vietnam*. Rough Guides UK.
- Hunt, John Dixon. (2015). *The making of place: Modern and contemporary gardens*. Reaktion Books.
- Kabisch, Nadja, Qureshi, Salman, & Haase, Dagmar. (2015). Human–environment interactions in urban green spaces—A systematic review of contemporary issues and prospects for future research. *Environmental Impact Assessment Review, 50*, 25–34.
- Kealiikanakaoleohaililani, Kekuhi, & Giardina, Christian P. (2016). Embracing the sacred: an indigenous framework for tomorrow's sustainability science. *Sustainability Science, 11*, 57–67.
- Ogwu, Matthew Chidozie. (2019). Towards sustainable development in Africa: the challenge of urbanization and climate change adaptation. *The Geography of Climate Change Adaptation in Urban Africa, 29–55*.
- Organization, World Health. (2016). *Urban green spaces and health*. World Health Organization. Regional Office for Europe.
- Putri, Rahma Wardana, Junaidi, Junaidi, & Mustika, Candra. (2019). Pengaruh pertumbuhan ekonomi, indeks pembangunan manusia dan kepadatan penduduk terhadap tingkat kemiskinan kabupaten/kota di Provinsi Jambi. *E-Jurnal Ekonomi Sumberdaya Dan Lingkungan, 8(2)*, 96–107.
- Ullah, Nadeem, Jiny, Wang, & Jin, Zhao. (2018). Mughal Gardens And Assessment of Mughal Empireres's Inclination Towards Lahore, Pakistan. *North American Academic Research, 68–88*.

Vila, Trinidad Domínguez, Darcy, Simon, & González, Elisa Alén. (2015). Competing for the disability tourism market—A comparative exploration of the factors of accessible tourism competitiveness in Spain and Australia. *Tourism Management*, 47, 261–272.

Vinod Kumar, T. M. (2022). Smarter Master Planning. In *Smart Master Planning for Cities: Case Studies on Domain Innovations* (pp. 3–79). Springer.

Zhang, Xing Quan. (2016). The trends, promises and challenges of urbanisation in the world. *Habitat International*, 54, 241–252.